



Wireless offline security solution

Schlage Control™ Smart Locks with ENGAGE™ cloud based web and mobile applications



Overview

ENGAGE™ Technology cloud based wireless offline security solutions simplify the ability to connect people, openings and access management to deliver cost effective intelligence and efficiency to any facility.

With the ENGAGE cloud based web and mobile apps, it's easy to configure lock settings, manage users with basic access privileges, and view lock audits from virtually anywhere. When paired with Schlage Control™ Smart Locks, updates to basic access privileges can be sent at the lock with the ENGAGE mobile app.

Schlage Control™ Smart Locks mark a new era of electronic access control in the multi-family world. By ushering in the next generation of highly scalable, efficiency boosting capabilities, multi-family properties can focus on operating more profitably—and with greater appeal for residents. Designed specifically for the resident unit door, Schlage Control Smart Locks feature a 100% pick- and bump-proof, no-cylinder design that improves security and safety.

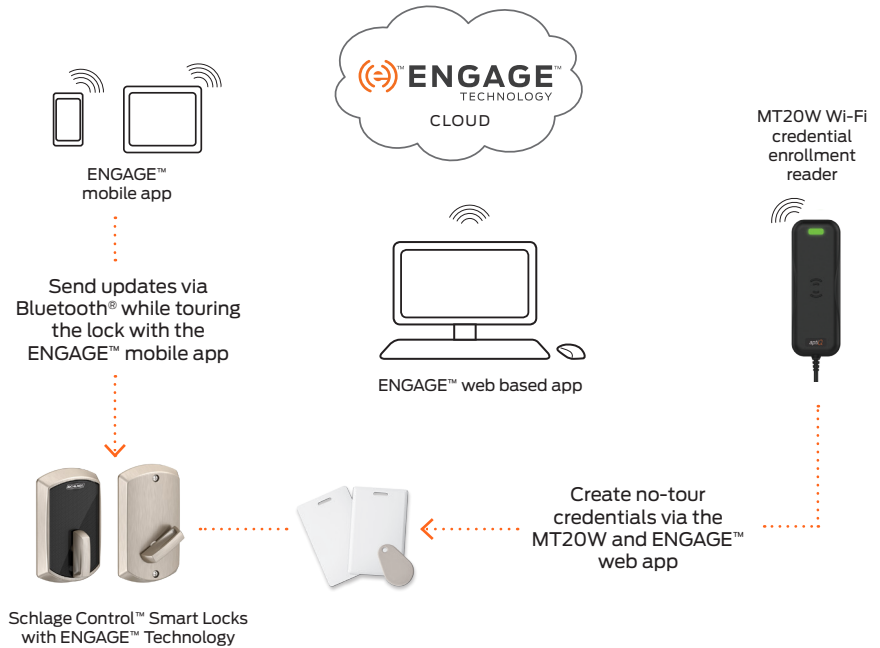
System Capabilities

- ENGAGE™ web app
 - Convenient web based application—managed from anywhere
 - Configure lock settings
 - Add new users and enroll credentials
 - Manage users and basic access privileges
 - View audits by door
- ENGAGE™ mobile app
 - Add and configure locks
 - Add new users and enroll credentials
 - Manage users and basic access privileges
 - View audits by door
 - Send updates manually at the lock
- Schlage Control™ Smart Lock
 - Up to 500 users and up to 1,000 audits
 - Lock programming via mobile application on phone and/or tablet (Bluetooth® connection)
 - Deadbolt and Interconnect designs available
 - Up to 2 years of battery life
 - 90 minute UL Listed A 156.12 Grade 2 ANSI/ BHMA certified

Manage access

Manage your site from virtually anywhere with ENGAGE cloud based web and mobile apps.

- Create and configure lock profiles
- Add new users
- Enroll no-tour credentials via MT20W
- Manage users and basic access privileges
- View audits by door
- Invite managers and operators to assist
- Update door files, firmware, and lock settings via Bluetooth® connection at the lock with administration rights



System capabilities:

Schlage Control Smart Locks offline security solution with ENGAGE technology

System capacity

Number of locks	Up to 100
Number of users	Up to 5,000 ¹
Number of audits	Up to 100,000 ²

Credentials

13.56 MHz Smart Credentials ³	aptiQ™ MIFARE Classic aptiQ™ MIFARE DESFire™ EV1
--	---

Status monitors

Battery voltage level ⁴	Yes
------------------------------------	-----

Credential attributes

Normal credential	Yes
Toggle credential	Same function as Normal
Pass through credential	Yes
Visitor/one-time use credential	No
Freeze credential	Yes
Block	Yes

¹ ENGAGE can manage up to 5,000 users, each Control lock can manage up to 500 users

² ENGAGE can hold up to 100,000 audits, each Control lock can hold 1,000

³ Please contact Allegion for additional details on integrated features and credentials supported.

⁴ Manually checked via Bluetooth® connection at the lock with ENGAGE Mobile App

Allegion, the Allegion logo, aptiQ, aptiQmobile, Schlage, the Schlage logo, ENGAGE Technology, the ENGAGE Technology logo, and XceedID are trademarks of Allegion plc, its subsidiaries and/or affiliates in the United States and other countries. All other trademarks are the property of their respective owners.

About Allegion™

Allegion (NYSE: ALLE) is a global pioneer in safety and security, with leading brands like CISA®, Interflex®, LCN®, Schlage®, SimonsVoss® and Von Duprin®. Focusing on security around the door and adjacent areas, Allegion produces a range of solutions for homes, businesses, schools and other institutions. Allegion is a \$2 billion company, with products sold in almost 130 countries.

For more, visit www.allegion.com.

aptiQ ■ FALCON ■ IVES ■ LCN ■ SCHLAGE ■ STEELCRAFT ■ VON DUPRIN

